



KANSAS GEOLOGICAL SOCIETY

BULLETIN

Volume 92 Number 3

May - June 2017

Established 1925

IN THIS ISSUE

AAPG 2017 ACE Highlights - 10

KGF Spring Mixer - 12

KGF Cornerstone and Foundation News - 18





THE TOTAL PACKAGE

www.dawson3d.com



MIDLAND 432-684-3000 | HOUSTON 713-917-6772
OKLAHOMA CITY 405-848-7512 | DENVER 303-723-0440
PLANO 972-881-1099 | CALGARY 403-263-7770

Use Your KGS Library For All Your Printing Needs

Old photos?
Old documents?
We can scan them for you!



THE RIGHT CHOICE FOR SEISMIC



SERCEL UNITE & INOVA HAWK CABLE-LESS SYSTEMS

CENTRALLY OWNED & OPERATED IN WICHITA, KS

AHV-IV COMMANDER 362/364 VIBS

HSE MANAGEMENT PROGRAM

SAFETY & QUALITY ORIENTED

PERMITTING SERVICES

3500 N. Rock Rd. Bldg. 800 Wichita, KS 67226

Phone: (316) 636-5552 Fax: (316) 636-5572 Website: www.parangongeo.com



New TrueLog

MJ Systems High Quality Depth Registered Raster Image Well Logs
Directly Import into popular Mapping and Cross-Section Applications

IT'S FAST • IT'S EASY • NO SOFTWARE • APPLICATION READY

► ORDER ► DOWNLOAD ► DIRECT IMPORT ► OWN THE LOGS

- No Long Term Contractual Obligations
- Never Have to Delete the Logs you Purchase

Search Catalog at www.mjlogs.com

Call 1-800-310-6451 or email esales@mjlogs.com

Providing Well Logs since 1971



Table of Contents

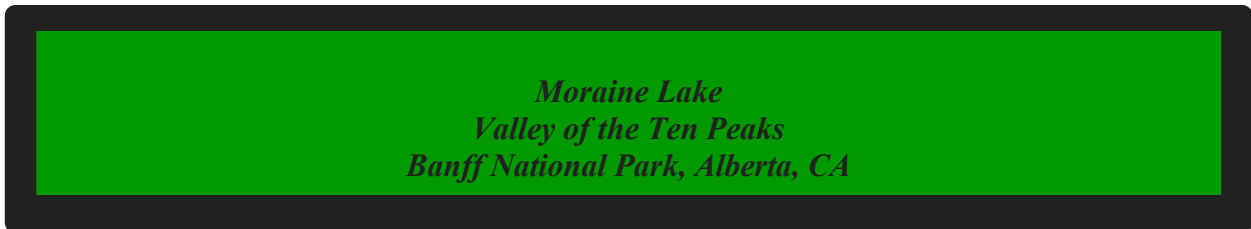
Features

2017 AAPG ACE Highlights, by Ernie Morrison.....	10
KGF 22nd Annual Spring Mixer.....	15

Departments & Columns:

KGS Tech Talks	4
President's Letter	7
Advertiser's Directory	8
Professional Directory	15
Kansas Geological Foundation Cornerstone.....	18
Exploration Highlights	21 & 22
Kansas Geological Foundation Memorials.....	23

ON THE COVER:



CALL FOR PAPERS

The Kansas Geological Society Bulletin, which is published bimonthly both in hard-copy and electronic format, seeks short papers dealing with any aspect of Kansas geology, including petroleum geology, studies of producing oil or gas fields, and outcrop or conceptual studies. Maximum printed length of papers is 5 pages as they appear in the Bulletin, including text, references, figures and/or tables, and figure/table captions. Inquiries regarding manuscripts should be sent to manager@kgslibrary.com or mailed to 212 N. Market, Ste. 100, Wichita, KS 67202. Specific guidelines for manuscript submission appear in each issue of the Bulletin, which can also be accessed on-line at the Kansas Geological Society web site at <http://www.kgslibrary.com>

SOCIETY Technical Meetings

KGS 2017 Technical Talks

- May 02 - *"PBS Nova: Life's Rocky Start"* - This will be a film presentation
- May 16 - *"Borehole Imaging: Introduction & Case Studies"* - John Bullard - Tucker Energy
- May 31 - *Field Studies - WSU Petroleum Class* - Larry Richardson

Please remember to check the website for the most up to date information on Technical Talks
<http://www.kgslibrary.com/techtalks.cfm>

*Tech Talks are held at Landmark Square
212 N. Market—4th floor
In the Wisdom Center*



Note: For those geologists who need 30 points to renew their licenses, there will be a sign-in sheet at each presentation and also a certificate of attendance.

KANSAS GEOLOGICAL SOCIETY



BOARD OF DIRECTORS

PRESIDENT Paul Ramondetta	PRESIDENT-ELECT Beth Isern
SECRETARY Ken Dean	TREASURER Wesley Hansen
DIRECTORS Tim Hellman Toby Eck Rocky Milford	ADVISORS David Clothier Curtis Covey

COMMITTEE CHAIRMEN

<u>Advertising Advisory</u>	Kent Scribner Dave Clothier Curtis Covey Doug Davis
<u>Annual Banquet</u>	Wesley Hansen
<u>Budget Committee</u>	Dave Clothier
<u>Bulletin</u>	Tim Hellman
<u>Continuing Education</u>	Kent Matson
<u>Distinguished Awards</u>	Larry Skelton
<u>Environmental</u>	Randy Teter
<u>Field Trip</u>	Larry Skelton
<u>Fishing Tournament</u>	Chuck Brewer
<u>Future Plans</u>	Ted Jochems
<u>Golf</u>	Larry Friend
<u>Historian</u>	John H. Morrison, III
<u>Investment</u>	
<u>Library</u>	
<u>Membership</u>	
<u>Nomenclature</u>	
<u>Picnic</u>	
<u>Public Relations</u>	
<u>Shooting Tournament</u>	Larry Richardson
<u>Technical Program</u>	Dave Clothier

A.A.P.G. DELEGATES

Ernie Morrison 2018	Douglas Davis 2018
------------------------	-----------------------

BULLETIN STAFF

EDITORS Ernie Morrison Wes Hansen	(316) 264-6366 (316) 772-6188
ADVERTISING Kent Scribner Stelbar Oil Corp.	(316) 264-8378
PROFILES/MEMORIALS Robert Cowdery	
EXPLORATION HIGHLIGHTS John H. Morrison, III Independent O&G	(316) 263-8281
STATE SURVEY KS Geological Survey	(785) 864-3965
SOCIETY NEWS KGS Library	(316) 265-8676
MANAGER Tammy Nichols-interim manager	(316) 265-8676
EDITOR EMERITUS Wes Hansen Larry Richardson	(316) 772-6188 (316) 262-8427

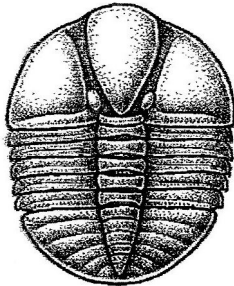
K.G.S. LIBRARY

PHONE 316-265-8676 **FAX** 316-265-1013
email: frontdesk@kgslibrary.com or
Web: www.kgslibrary.com

The KGS *Bulletin* is published bi-monthly by the Kansas Geological Society, with offices at 212 North Market, Wichita, Kansas 67202 Copyright 2016, The Kansas Geological Society. The purpose of the *Bulletin* is to keep members informed of the activities of the Society and to encourage the exchange and dissemination of technical information related to the Geological profession. Subscription to the *Bulletin* is by membership in the Kansas Geological Society. Limited permission is hereby given by the KGS to photocopy any material appearing in the KGS *BULLETIN* for the non-commercial purpose of scientific or educational advancement. The KGS, a scientific society, neither adopts nor supports positions of advocacy, we provide this and other forums for the presentation of diverse opinions and positions. Opinions presented in these publications do not reflect official positions of the Society.



Twenty-two Trucks Serving
 Kansas—Colorado—Texas—Nebraska—Illinois
 DST's
 Back Pressure testing (G1 & G2)
 Slick line services using the same Weatherford
 Electronic Pressure Gauges used on DST's



1-800-728-5369
 FAX 1-785-625-5620

www.trilobitetesting.com
 trilobite@eaglecom.net

SHOPS LOCATED IN:
 Hays, KS
 Scott City, KS
 Pratt, KS
 Hugoton, KS
 Oberlin, KS
 Clay City, IL

CAN YOU NAME THE CRITTER?

Sponsored by Trilobite Testing, Inc.

Is your paleo up to date?

If you know the name of the trilobite,
 submit your guess via e-mail to
 manager@kgslibrary.com

Remember that *Trilobite Testing* is
 sponsoring your efforts, so be sure to thank
 Paul Simpson the next time you see him.

CONGRATULATIONS!!
Randy Lilak correctly identified
The last one as: Harpides

Bulletin committee members and PhD's in
 Paleontology are prohibited from entering.



UNIVERSITY OF KANSAS
 Franklin D. Murphy, M.D., Chancellor

STATE OF KANSAS
 George Docking, Governor

MINERAL INDUSTRIES COUNCIL

B. O. Weaver (77), Chairman
 E. A. Spencer (77)
 W. L. Stryker (77)
 Howard Carey (78)
 Simon S. Clark (78)
 Lee H. Cornell (78)

Brian O'Brien (79), Vice Chairman
 E. J. Jungmann (79)
 George K. Mackie, Jr. (79)
 Charles Cook (80)
 Dana Hansen (80)
 Joe E. Donham (80)

THE SURFACE FEATURES OF KANSAS

By RAYMOND C. MOORE

STATE GEOLOGICAL SURVEY
 Frank C. Foley, Ph.D., State Geologist and Director
 William W. Hamblin, Ph.D., Assistant State Geologist
 and Assistant Director
 Raymond C. Moore, Ph.D., Sc.D., Principal Geologist

STATE BOARD OF REGENTS
 A. W. Hershberger, Chairman

McDill Bond
 Claude C. Bradley
 Ray Evans
 Clement H. Hill

Mrs. Leo Harghey
 Lawrence Margus
 Oren Stoffer
 Harry Valentine

Get Your Maps copied at the KGS library

We can scan, copy, and print up to 44" wide

Color or Black & White

Solid Color @ \$4.00/sq. ft.

Line maps with color @ \$3.00/sq. ft.

President's Letter

Greetings to all KGS Members!

Trees are green and flowers in bloom, a time to take in natural beauty as we see the living world grow! Likewise, the continued growth in drilling activity has further improved the society's economic standing as its investments grow and the library sells more the data-hungry oil & gas industry.

The society continues in its quest for a permanent library manager. Tammy Nichols is the interim manager, and continues the difficult task of maintaining the complex nature of its many functions. She and her staff of three (Rhonda, Angela, and Janice) have continued to provide the membership with trusted high quality service that all are accustomed.

Angela Forrest (library employee) completed a successful mission Houston in early April, attending the 100th AAPG anniversary at national convention. She manned the KGS booth, and expertly engaged the many visitors as she promoted the library status, and that of Kansas exploration in general. Several others from the KGS also attended, David Clothier, Doug Davis, Ernie Morrison, and Wes Hansen in particular were very helpful in aiding Angela this her first such experience.

Our large and complex collection of data is both unique and diverse. Both paper and digital records will ensure our continued relevancy well into the future. We continue to add to it as large data donations continue to pour in, and must then be integrated to our collection through the efforts of the employees of both the Society and Foundation. It is a priceless irreplaceable asset of great historical and modern importance that is certainly worth fighting for as we maintain the local control that has served us well for nearly a century. I am committed to further enrichment of our collection and service to the public.

As a reminder, the general membership is currently voting on two amendments to the KGS constitution; ballots will be counted on May 15th. Please take the time to vote soon if you have an opinion regarding those issues.

Please attend the Spring Mixer on Thursday evening May 18th at the Petroleum Club, a Foundation fund raiser, and a good time for libation! May this season bring you a surge of growth as we continue to ride this wave of increased prosperity well into the future. Thank you for your continued support.

Paul Ramondetta
Kansas Geological Society President



Kansas State University
DEPARTMENT OF GEOLOGY

Graduate education for active professionals in this innovative program, workshops, site visits and distance courses help professionals advance in their careers. Whether your goal is to receive academic credit, certifications or a master's degree in geology, you'll find a path that leads to your career goals.

CHOOSE FROM SPECIALIZATIONS IN:

- ▶ Petroleum geology
- ▶ Environmental geochemistry
- ▶ Structural Geology
- ▶ Groundwater
- ▶ Exploration geophysics
- ▶ Geomicrobiology

LEARN MORE

Contact Pamela Kempton, department head, for more information at pkempton@k-state.edu. Or contact any of our program partners to learn more.

*K-State Global Campus: dce.k-state.edu
 Geology department: k-state.edu/geology
 Graduate School: k-state.edu/grad*



Log in to
 Walters Digital Library
 At
www.kgslibrary.com

Log in as our guest
 and see the Society's Database
 A convenient way to see what
 you might want to order!
 Call or email your order to:
 316-265-8676
frontdesk@kgslibrary.com

ADVERTISER'S DIRECTORY

	<i>page</i>
Allied Cementing Company, Inc	24
Dawson Geophysical Company	2
Duke Drilling	24
GeoSteering	14
Kansas Geological Foundation	22
Kansas State University	8
Lockhart Geophysical	24
MJ Systems	2
Murfin Drilling Company, Inc	24
PARAGON Geophysical Services, Inc	2
Professional Directory	18-19
Trilobite Testing	6
Walters Digital Library	9
Well Enhancement Services, LLC	14

ADVERTISER'S RATES: 2017

Full Page	B&W	Color
6 issues	\$2,000	\$2,500
3 issues	\$1,080	\$1,325
1 issue	\$480	\$525
1/2 Page		
6 issues	\$1,000	\$1,500
3 issues	\$540	\$825
1 issue	\$225	\$350
1/4 Page		
6 issues	\$600	\$900
3 issues	\$325	\$525
1 issue	\$150	\$250
1/8 Page		
6 issues	\$300	\$500
3 issues	\$175	\$325
1 issue	\$75	\$185
Professional Ad (Business Card)		
6 issues	\$90	\$180

For one-time ads, call Kent Scribner at 316-264-8378

UNIVERSITY OF KANSAS STATE OF KANSAS
 Franklin D. Murphy, M.D., Chancellor George Docking, Governor

MINERAL INDUSTRIES COUNCIL
 B. O. Weaver ('97), Chairman Brian O'Brien ('99), Vice Chairman
 K. A. Spover ('92) E. J. Jennings ('91)
 W. L. Stokley ('97) George K. Mackler, Jr. ('99)
 Howard Casey ('88) Charles Cook ('90)
 Susan S. Clark ('85) Don Harmon ('90)
 Lee H. Cornell ('85) Joe E. Deiban ('86)

STATE GEOLOGICAL SURVEY
 Frank C. Foley, Ph.D., State Geologist and Director
 William W. Hankins, Ph.D., Assistant State Geologist
 and Assistant Director
 Raymond C. Moore, Ph.D., Sc.D., Principal Geologist

STATE BOARD OF RECENTS
 A. W. Henkberger, Chairman
 Mr. Leo Houghay
 Lawrence Morgan
 Oscar Bradley
 Harry Valentine

McDell Bond
 Clark C. Bradley
 Roy Evans
 Clement H. Hall

THE SURFACE FEATURES OF KANSAS

By RAYMOND C. MOORE

Get Your Maps copied at the KGS library

We can scan, copy, and print up to 44" wide

Color or Black & White

Solid Color @ \$4.00/sq. ft.

Line maps with color @ \$3.00/sq. ft.

Tertiary HIGH PLAINS BLUE HILLS UPLAND SMOKY HILLS UPLAND FLINT HILLS OSAGE PLAINS
 Cretaceous Permian Pennsylvanian Unconsolidated Ordovician and Cambrian
 Pre-cambrian

Robert F. Walters Digital Library

Log in as our Guest

username: guest

password: guest

316-265-8676



**Let Us Print Your Geo Reports
 And Save Your Time For Finding More Oil & Gas
 Top Quality Color Printing For Our Membership**

Email your files to: kgsorders@gmail.com



In case you missed it here is a rundown of the AAPG Convention that was in early April in Houston.

The KGS had a booth at this event and it was operated by Angela. Not sure how many new members we had but at times traffic was brisk around the booth. In addition to representation by the KGS, Dave Clothier, Paul Ramondetta, Wes Hansen, Doug Davis, Ernie Morrison and Joel Alberts were also at the convention. For those of you that didn't make it you missed an excellent opportunity to hear some great talks, see some amazing posters and network with 7500 plus other geologists. Most were upbeat and felt the future was strong. One of the statements I really like was: \$50 oil is really good but \$70 oil is even better. One of the highlights was Dr. Hendratta Ali of Fort Hays State University receiving an Inspirational Education Award at the AAPG Foundation Banquet.

On Tuesday Morning the Midcontinent AAPG Section had their annual meeting. Some of the highlights of this meeting were: Fort Smith reported that last falls' field conference was a success with 129 attendees and a profit of \$9550. Dr. Chris Fielding from Nebraska reported that the Nebraska Field Conference set to be held next year is coming together and the dates have been set for October 5th and 6th of 2018. Mark your calendars for this event. It is not often enough we get to see some of the Pennsylvanian carbonates in outcrop.

The Funding and Scholarship Committee awarded \$37,000 in scholarships and grants including \$4,000 to the Kansas Geologic Foundation.

The Midcontinent Imperial Barrel contest had the University of Kansas, University of Oklahoma and the University of Arkansas place in that order. Wichita State received an honorable mention. In Houston the team of five Ph.D. and M.S. students from the University of Houston won the world final award. The winner received \$20,000 to be used in the coming year to support the activities of the department. As you can imagine this is a fierce competition.

On a down note membership in the Midcontinent section of AAPG has declined. If you were a member or want to become a member of AAPG please consider doing so. You have local representation to go to these meeting and the more members there are the greater the number of representative there are to represent you. If you are thinking about joining AAPG or being involved, the AAPG Midcontinent Section Meeting in Oklahoma City would be a great place to start. The dates are September 30th through October 3rd. The papers should be great and you will have a chance to network with geologists working the areas you work. More information will be coming out about registration.

(Submitted by Ernie Morrison)

2017 AAPG MID-CONTINENT SECTION MEETING

OKLAHOMA CITY, OKLAHOMA | SEPTEMBER 30 - OCTOBER 3, 2017

“Today’s Idea - Tomorrow’s Discovery”



www.2017AAPGMCSMeeting.org

KGF 22nd Annual Spring Mixer

Dear Members and Friends of the Kansas Geological Foundation:

You and your spouse, friends, colleagues, and / or employees are invited to attend the **TWENTY-SECOND Annual Kansas Geological Foundation Spring Mixer**.

The **KGF Mixer** will be held on **Thursday, May 18th**, at the **Petroleum Club** from **4:30 PM to 8:00 PM**. Kathy Latham and her excellent staff have agreed to host another exceptional event.



As always, membership in the Kansas Geological Foundation or the Kansas Geological Society is **NOT** required to attend (but some of you may join the Foundation before you leave the event). Anyone even remotely interested in geology (or geologists) is welcome to attend for FREE, and everyone is invited to join the Kansas Geological Foundation for a minimum \$50 /year contribution, which is a tax deductible donation to a non-profit/charitable/educational organization.

We of course are asking for **DONATIONS** to subsidize this event to offset the cost of food, libations and services, as the Board of Directors is always under the impression that this event should be self-supporting. In addition to sponsoring the Mixer, your donation assists the Foundation in continuing to sponsor its current endeavors which include both educational and data preservation efforts.

The KGF Board of Directors has announced the plans for the **Accelerated Data Integration Project**, which targets an *accelerated* pace for moving, cataloging, scanning, etc., donated geologic data and materials from storage up into the KGS library facility. Somewhere in that mass of unsorted and unincorporated data there may exist that one missing piece of information that leads a geologist to a major discovery. Not only does this take an incredible amount of time, it also takes *money*. Please join us May 18th to learn more about the project, and please consider being involved in it through a one time or multi-year commitment.

I really hate to try to get into your pocket during these tough times in the petroleum industry, but to defray the costs of the Mixer, please consider a **donation**, (even just \$10 or \$20 as every little bit helps). Donations to offset the cost of the Mixer should be sent to the KGF, 212 N. Market, Suite 100, Wichita, KS 67202. As always, contributors to this event will be recognized at the Mixer, unless otherwise instructed.

Please contact the KGF at 265-8676 with any additional questions you might have. I look forward to seeing you there!

THANK YOU!

Respectfully,
Roger L. Martin, KGF Annual Spring Mixer Chairman-for-Life

Be there or be square

WOULD YOU LIKE TO INCREASE YOUR PRODUCTION AT A FRACTION OF THE COST OF HORIZONTAL DRILLING?



Well Enhancement Services, LLC is jetting laterals utilizing new technology and coiled tubing. We now have the ability to place hundreds of gallons of acid hundreds of feet away from the well bore. This allows us to not only enhance existing production but to produce reserves previously unreachable. It has established itself by repeatedly increasing production in both new and existing wells. Contact us for more information, questions or to schedule your next well with **WES**.



Please Contact Us:

Phone: (785) 625-5155
 Fax: (785) 625-4151
 Field: (785) 259-4638

wesofhays@hotmail.com
 Box 87, Schoenchen, KS 67667

“Tap into success....with WES”

www.**GeoSteering**.com

281-573-0500
 info@geosteering.com

Free introductory consultation with modeling: let us demonstrate whether images or propagation resistivity could add value to your well.

Personnel with degrees & 20+ years of oilfield experience

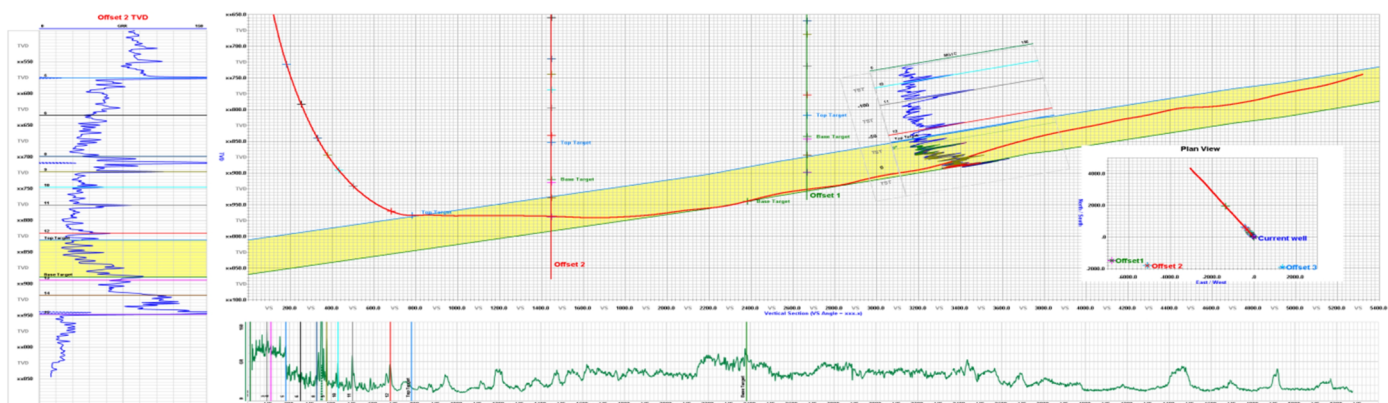
Proprietary software

TST interpretation for GR only jobs

Image displays / interpretation for jobs with azimuthal GR, resistivity or density

Resistivity modelling / interpretation for jobs with LWD propagation resistivity

Real-time (always)



PROFESSIONAL DIRECTORY

Kirk Rundle
Consulting Geophysicist

3D Seismic Design, Acquisition to Processing QC.,
 Interpretation and Analysis, Subsurface Integration
 7340 W. 21st. N., Ste. 100
 Wichita, Kansas 67205


Office: 316-721-1421 Fax: 316-721-1843
 Email: kirk@rundlegeo.com

Covey The Well Watchers
One Thousand Wells and Counting"

Curtis E. Covey Wellsite Petroleum Geologist

Gas Trailer Cell: 316-217-4679 Office: 316-776-0367
 Email: wellsitgeol@gmail.com 6548 Bedford Circle
 Derby, Kansas 67037

Gas Detection Trailer & Internet/Phone Communications



Banks Resources

Scott Banks
 Petroleum Geologist
 banksb@aol.com
 Cell: 316.253.8550

1700 N. Waterfront Pkwy.
 Bldg. 300 • Suite C
 Wichita, KS 67206

Phone: 316.558.5262
 Fax: 316.558.5263

WESLEY D. HANSEN
Consulting Geologist

Well site Supervision • Geologic Studies
 212 N. Market, Ste 257
 Wichita, Kansas 67202
 Office/Mobile: (316) 772-6188
 whansen4651@sbcglobal.net
 35 Continuous Years in the Kansas Oil Patch



KEVIN L. KESSLER
 INDEPENDENT/CONSULTING PETROLEUM GEOLOGIST

WELLSITE SUPERVISION • GEOLOGIC RESEARCH
 OIL & GAS PROSPECTS
 KANSAS & EASTERN COLORADO

MAILING ADDRESS PHONE
 1199 N. PONDEROSA RD. RES.: (316) 522-7338
 BELLE PLAINE, KS 67013 MOBILE: (316) 706-6636
 EMAIL: KKESSLER1199@AOL.COM

ROGER L. MARTIN
 Independent Petroleum Geologist

200 E 1st St, Ste 405, Wichita, KS 67202

Cell: 316-833-2722 Office: 316-250-6970
 KS Field Cell: 316-655-1227
 Fax: 316-425-3829
 Email: rogermartingeo@yahoo.com

ALFRED JAMES III
 Petroleum Geologist
 Kansas - Colorado - Utah

4912 E. 29th St. N., Ste. 3, Wichita, Kansas 67220

SIPES # 1111
 Office (316) 267-7592
 james.alfred21@yahoo.com

M. (Brad)ford Rine, Geologist

Licensed, Registered, Certified

PROSPECT EVALUATION PROSPECT ORIENTATION
 WELLSITE SUPERVISION DRLG/COMPL CONSULTATION
 RESERVOIR STUDIES PROPERTY EVALUATION
 EXPERT TESTIMONY BANJO PICKER

100 South Main Suite #415
 Wichita, Kansas 67202 Email: rinemb@sbcglobal.net
 Office & Cell: (316) 250-5941

Your business card ad
 Could be right here
 For only \$90/year

MELLAND ENGINEERING, INC.
 Petroleum Engineering & Geological Consulting

James E. Melland, P.E., P.G.
 President

Office: (620) 241-4621 Fax: (620) 241-2621
 jamesm@mellandengineering.com
 www.mellandengineering.com
 P.O. Box 841, McPherson, KS 67460

Your business card ad
 Could be right here
 For only \$90/year

WOW
CHEESESTEAKS
 AND HOAGIES

803 NORTH WEST STREET
 WICHITA, KANSAS - 67203
 (316) 491-1239
 CALL OR COME IN - SEATING INSIDE
 www.wowcheesesteaks.com



KGF 22nd Annual Spring Mixer

May 18th, 2017
Wichita Petroleum Club
4:30-8:00 PM

Free Beer, Wine and Hors d'oeuvres

NOTICE!!!!
WSU GEOLOGY CLUB
& Papa John's Pizza

Papa John's offered WSU student organizations an opportunity to raise monies for their organizations.

The **WSU Geology Club** is participating
And **YOU** can help them!

When ordering pizza from Papa John's,
Use this code: **WSU004**
(those are zero's, not letter O)

With this code, the customer will receive 40% off their entire online order and WSU's AAPG Student Chapter will receive 10% of the money spent on the order.

Eating pizza tonight?
Let's help WSU Geology Club!

Monies raised will be used towards gas money to travel to local schools when they promote the geosciences to grade schools, registration costs for workshops, seminars and AAPG Student Expos, and social and academic events like an upcoming "Lunch and Learn" series next fall.

We Invite You To join

Kansas Geological Foundation

*\$50.00 membership is
tax deductible*

Call 316-265-8676

*Or send checks to:
Kansas Geological Foundation
212 N. Market, Ste. 100
Wichita, KS 67202*

The Following Are For Sale

Kansas Completion Cards:
Several sets (call for more information)

Oklahoma Completion Cards

New Mexico Completion Cards

North Dakota Completion Cards

Utah Completion Cards

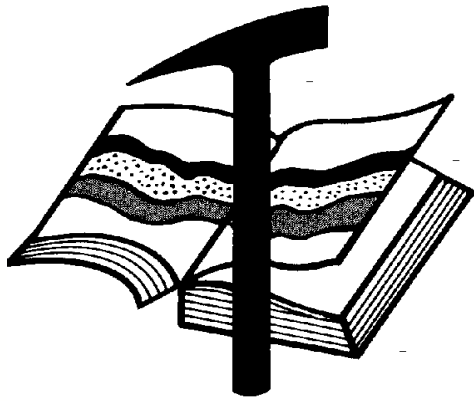
Microfiche Electric Logs

*Kansas
Oklahoma
Texas*

Geological Office Furniture:

- 8-drawer completion card cabinets
- 7-drawer cabinets
- Map cabinets—metal—2 available
- Map racks—different sizes

Call: 316-265-8676
Ask for Ted



Kansas Geological Foundation

Web Site: www.kgfoundation.org

**212 North Market
Wichita, Kansas 67202**

A not-for-profit educational and scientific corporation

GOALS:

- promote geology and earth science
- preserve geological records
- establish memorials and endowments
- support field trips and seminars
- financial aid and grants to students

PLEASE HELP SUPPORT THE FOUNDATION

Kansas Geological Foundation Services

The Kansas Geological Foundation provides the following services as a part of the organization's commitment to educate the public regarding earth science.

Speaker's Bureau

A list of speakers available to talk about various aspects of geology may be obtained by contacting Janice Bright at the KGS Library, 265-8676. This service is free to the public.

DVD/Videotape Library

The KGF maintains a DVD & videotape library focused primarily on the various fields of earth science. These tapes may be checked out without charge by the public. To obtain a list of tapes, please contact the KGS Library, 212 N. Market, Ste. 100, Wichita, KS 67202, or call Janice Bright at 265-8676.

The Kansas Geological Foundation was founded in March, 1989 as a not-for-profit corporation under the guidelines of section 501(c)(3) of the tax code to provide individuals and corporations the opportunity to further the science of geology. It is dedicated to providing charitable, scientific, literary and educational opportunities in the field of geology for the professional geologist as well as the general public.

KGF can receive in-kind donations through which the donor may receive a tax deduction. Of equal importance, the KGF provides the financial resources to sort, process and file this data at the KGS library. If you have a donation to make, please contact the KGF at 265-8676.

Your tax-deductible membership donation helps to defray the cost of processing donations and to support public education programs about the science of geology. Annual membership begins at \$50.00 per year. Donations of \$100.00 or more are encouraged through the following clubs:

Century Club	\$ 100 to \$ 499
\$500 Club	\$ 500 to \$ 999
Millennium Club	\$1000 to \$5000
President's Club	\$5000 and over

Kansas Geological Foundation

Cornerstone

Kansas Geological Foundation News

Currently, the Foundation has four students working on well log integration: Kyle Lawson, Helen Cruz, Shuyao Li (a.k.a. Emily) and David Bruce. They work between two and fifteen hours per week. More than a dozen other part-time integrators have worked on the project since 2010.

Between 2011 and 2016, the integration project compared 131,811 well logs to holdings on Walters Digital Library (WDL). Of these, 45,814 (34.8%) were not in WDL and were subsequently added to the library holdings. Additionally, 1,173 of the donated logs were re-scanned to replace poor images on WDL.

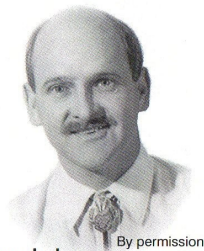
In the first quarter of 2017, 1,182 donated logs were compared to WDL. 175 (14.8%) new logs were added to WDL, with nine re-scans.

There have been some noteworthy data donations recently. Vess Oil Corp. donated several file cabinets of well logs and a very large strip chart collection which was compiled by Cities Service. Many of these strip charts date back to the 1920s. Pat Deenihan donated several boxes of well logs. Sal and Chellie Mazzullo donated a couple hundred old maps. We thank all donors for supporting the Foundation. (Submitted by Ted Jochems).

2017 KGF Grants

At the April 19, 2017 KGF Board meeting, a grant request from William Hagood, graduate student at Kansas State University, was reviewed. His project involves the study of 13 cores of the Viola Formation in Southwest Kansas. His project supervisors are Dr. Matthew Totten and Dr. Karin Goldberg at KSU. The KGF Board approved \$1100.00 (one half of his request) with the balance to be paid from our next budget as progress is shown.

The Kansas Geological Foundation Needs You!



The KGF provides the financial resources to sort, process and file, in-kind donations of geological data at the KGS library. Due in large part to the KGF this unique and rare well of information is being made available to all. Please consider telling your company management and colleagues about the benefits of a library that continues expanding in part because of the KGF.

We very much value and need your financial support.

KGF Officers and Board Members

President- Larry Richardson
Vice President - Marc Summervill
Treasurer - Wes Hansen
Secretary - Ken Wallace

Board Members

Monica Williams
Bryce Bidleman
Brian Fisher
Ken Leblanc
David Doyel

Kansas Geological Foundation News

Students: The KGF awards scholarships each December and May. Check with your department chairs for applications. You must submit complete applications by the deadline.

Applications for the Fall semester were due by May 1, 2017. At the May KGF meeting the recipients for Fall 2017 scholarships will be determined.

Grants to help with research on Kansas related geology are also considered for aid.

Kansas Geological Foundation Video / DVD Collection

The KGF has an extensive collection of videos available for check-out at no charge.

Only pay for shipping back.

These are ideal for classroom or general public viewing.

See the web for titles & descriptions
www.kgfoundation.org

Call 316-265-8676

Ask for Janice to check out videos



Robert F. Walters Digital Library
The most complete source for Kansas data
Database updated nightly
Day or Night
You can get to the data as you need it
www.kgslibrary.com
To Join: call 316-265-8676

12 Drilling Rigs
To depth of 8,500 ft.



WESTERN KANSAS
SOUTHERN NEBRASKA
EASTERN COLORADO

For contract information contact:
Blaine Miller
 Drilling Manager

316-858-8607 (Direct)
316-267-3241 (Main)

250 N. Water, Ste. 300
Wichita, KS 67202

DRILLING COMPANY

ROTARY DRILLING CONTRACTOR

620 Hubbard PO Box 823
 Great Bend, KS 67530
 Phone 620-793-8366

100 S. Main, Ste. 410,
 Wichita, KS 67202
 Phone 316-267-1331
 Fax 316-267-5180

2D & 3D Vibroseis Acquisition
ARAM*AIRES Seismic Recording System

1600 Broadway, Suite 1660 • Denver, CO 80202-4915
 (303) 592-5220 • info@lockhartgeo.com
 for complete information go to: www.lockhartgeo.com

Great Bend (620) 793-5861 Ness City (785) 798-3843 Medicine Lodge (620) 886-5926

GREAT BEND 793-5861 NESS CITY 798-3843
MEDICINE LODGE 886-5926

Russell (785) 483-2627 Oakley (785) 672-3452

AAPG Needs You!
Professional geoscientists, share your world!

The Mid Continent Section has **17 AAPG Student Chapters**, but only **3 Visiting Geoscientists**...which makes it almost impossible to have a professional geoscientist visit to each school at least once a year or even once every two years. The aim of AAPG's program is to give students a flavor of a professional life in energy resources. It also hopes to encourage dialog between industry and academia.

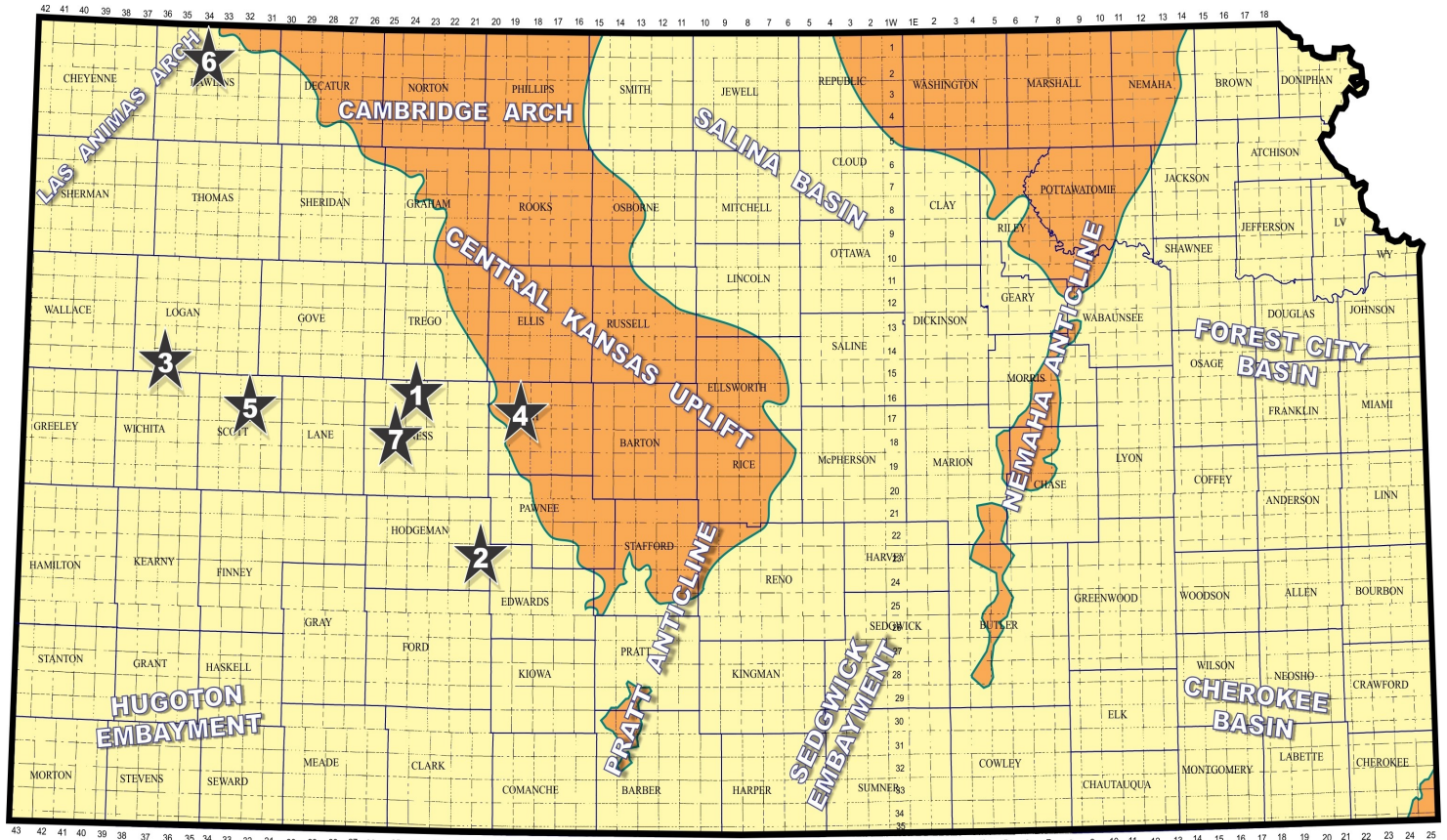
To be a Visiting Geoscientist bearing the AAPG flag, you are asked to have at least 5 years of experience and make at least one visit per year to a university. It can be a school with an AAPG Student Chapter, or a college/university without one. Your choice.

The Mid Continent schools with Student Chapters are: Missouri University, Fort Hays State University, Iowa State University, Kansas State University, Missouri State University, University of Nebraska, Northwest Missouri State University, Oklahoma State University, University of Oklahoma, University of Arkansas, University of Iowa, University of Kansas, University of Missouri, Columbia University of Tulsa and Wichita State University.

Contact Robbie Gries, co-Chair VGP committee, Denver, if you are interested in learning more. rreries@aol.com

Exploration Highlights

By John H. Morrison, III
Independent Oil & Gas



Map courtesy of Marc Summerville

Trans Pacific Oil Corp., Wichita (KS), has discovered new Cherokee Sand oil reserves in Ness County with the successful completion of their #1-16 Rolf. The wildcat well, located in the NE/4 of section 16- T16s- R24W, establishes a new unnamed oil field about 2.5 miles northwest of the town of Ransom, KS. The well was drilled to a total depth in the Mississippian formation of 4,650 ft. Discovery site lies nearly one mile east of established Mississippian oil production in the Ransom Northwest Field (1976). (API 15-135-25935)

Carmen Schmitt, Inc. of Great Bend (KS) is producing oil from the Mississippian formation at the #1 Horacek A in Hodgeman County. The wildcat well found new oil deposits nearly two miles southeast of the Kingry Field (1963) where the Mississippian formation is also productive. Operator drilled the well to a total depth of 4,576 ft. at location in the NW/4 of section 13- T23s- R21W, about 12 miles southeast of Hanston, KS. The new field has not been named. (API 15-083-21931)

Ritchie Exploration, Inc., Wichita (KS), is producing an undisclosed amount of crude oil at the #1 Blau 16-C wildcat well in Logan County. The well found oil deposits in the SW/4 of section 16- T15s- R36W. The Mississippian formation was initially targeted for exploration when drilled to a total depth of 5,022 ft by log measurement. No production information has been released. The Rackmaster Field, which lies about 2 miles away, produces Marmaton oil and was also discovered by Ritchie Exploration last year. The Blau lease is situated about 11 miles south and 7 miles west of Russell Springs, KS. The new oil field has not been named. (API 15-109-21472)

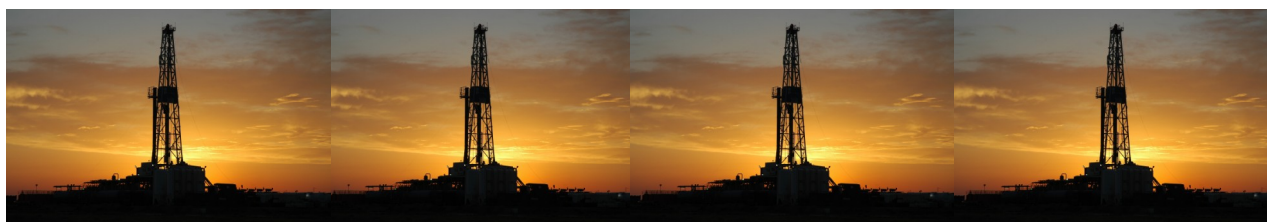
Lachenmayr Oil, LLC, Newton (KS), is pumping 7 bbls of oil per day from the Arbuckle formation at the #1

JME Farms new pool discovery in Rush County. The wildcat well was drilled in the NE/4 of section 17-T17s- R19W, about one mile south of established production in the Hampton Field (1967, Basal Pennsylvanian Conglomerate, Arbuckle oil). Total depth was obtained at 3,901 ft. Production comes from 10 feet of open hole. The unnamed oil field is located about 7 miles east of the town of McCracken, KS. (API 15-165-22138)

Stelbar Oil Corporation, Wichita (KS), has discovered new oil reserves in the Marmaton (Pawnee) and Basal Pennsylvanian formations to establish a new unnamed oil field in Scott County. The #1-36 J. Nuss was drilled into the Mississippian formation at a total depth of 4,640 ft in the NW/4 of section 36-T17s- R32W. Discovery site lies over 3/4-mile northwest of production in the Beckley North Field (1994, Marmaton, Cherokee, Mississippian oil), nearly 3 miles north and 5 miles east of Scott City, KS. (API 15-171-21187)

In Rawlins County, Murfin Drilling Company, Inc., Wichita (KS), has successfully completed the #1-7 Haller new pool discovery in the SW/4 of section 7- T2s- R34W. The well is producing an undisclosed amount of oil from the Lansing-Kansas City zones with total depth reaching 4,735 ft. Discovery site is located nearly 3 miles southeast of the St. John Cemetery Field, which has produced over 491,000 bbls of oil from 11 wells since it's founding in 1985. The unnamed field is located about 4 miles north and 2.3 miles east of the town of Beardsley, KS. (API 15-153-21182)

Stewart Producers, Inc. of Mt Vernon, IL. has started producing oil at the #1 Dinges Trust, spotted in the SW/4 of section 13- T18s- R25W, in Ness County. The wildcat well is producing an undisclosed amount of crude from the Mississippian formation and establishes a new oil field over one mile north of similar production in the now abandoned Laird North Field (1977-1996). Operator drilled the well to a total depth of 4,440 ft. The unnamed pool is located about 2.5 miles north and 0.5 miles east of the town of Laird. (API 15-135-25941)



Kansas Geological Foundation Memorials

KGS Member	Date Deceased	Memorial Est.	KGS Member	Date Deceased	Memorial Est.
Dan Bowles	09/89	1990	Claud Sheats	02/02	2002
John Brewer	10/89	1990	Merle Britting	2002	2002
George Bruce	08/89	1990	Harold Trapp	11/02	2002
Robert Gebhart	01/90	1990	Donald M. Brown	11/02	2003
Ray Anderson, Jr.	11/90	1990	Elwyn Nagel	03/03	2003
Harold McNeil	03/91	1991	Robert Noll	09/03	2003
Millard W. Smith	08/91	1991	Benny Singleton	09/03	2003
Clinton Engstrand	09/91	1991	Jay Dirks	2003	2003
M.F. "Ted" Bear	10/91	1991	J. Mark Richardson	02/04	2004
James & Kathryn Gould	11/91	1991	John "Jack" Barwick	02/01	2004
E. Gail Carpenter	06/91	1993	Richard Roby	03/04	2004
Benton Brooks	09/92	1992	Ruth Bell Steinberg	2004	2004
Robert C. Armstrong	01/93	1993	Gordon Keen	03/04	2004
Nancy Lorenz	02/93	1993	Lloyd Tarrant	05/04	2004
Norman R. Stewart	07/93	1993	Robert J. "Rob" Dietterich	08/96	2004
Robert W. Watchous	12/93	1993	Mervyn Mace	12/04	2004
J. George Klein	07/94	1994	Donald Hoy Smith	04/05	2005
Harold C.J. Terhune	01/95	1995	Richard M. Foley	06/05	2005
Carl Todd	01/95	1995	Wayne Brinegar	06/05	2005
Don R. Pate	03/95	1995	Charles B. Moore	09/96	2005
R. James Gear	05/95	1995	Jack Heathman	05/06	2006
Vernon Hess	06/95	1995	Charles Kaiser	09/06	2006
E. K. Edmiston	06/95	1995	Rod Sweetman	08/06	2006
Jack Rine	07/95	1995	Karl Becker	10/06	2006
Lee Cornell	08/95	1995	Frank Hamlin	10/06	2006
John Graves	10/95	1995	Marvin Douglas	12/06	2006
Wilson Rains	10/95	1995	Robert W. Hammond	04/07	2007
Heber Beardmore, Jr.	09/96	1996	Eldon Frazey	04/07	2007
Elmer "Lucky" Opfer	12/96	1996	Pete Amstutz	05/07	2007
Raymond M. Goodin	01/97	1997	Charles Spradlin	05/07	2007
Donald F. Moore	10/92	1997	Donald R. "Bob" Douglass	09/07	2007
Gerald J. Kathol	03/97	1997	Vincent Hiebsch	11/07	2007
James D. Davies	08/88	1997	Glen C. Thrasher	03/08	2008
R. Kenneth Smith	04/97	1997	Peg Walters	06/08	2008
Robert L. Dilts	05/97	1997	Theodore "Ted" Sandberg	07/08	2008
Delmer L. Powers	06/72	1997	James Ralstin	11/08	2008
Gene Falkowski	11/97	1997	Earl Brandt	04/09	2009
Arthur (Bill) Jacques	01/98	1998	Walter DeLozier	05/09	2009
Bus Woods	01/98	1998	Don D. Strong	01/10	2010
Frank M. Brooks	03/98	1998	John Stone	02/10	2010
Robert F. Walters	04/98	1998	Craig Caulk	03/10	2010
Stephen Powell	04/98	1998	Joseph E. Moreland, Jr.	03/10	2010
Deane Jirrels	05/98	1998	Gene Garmon	03/10	2010
William G. Iversen	07/98	1998	James F. Dilts	05/10	2010
Ann E. Watchous	08/98	1998	Jerry Pike	05/10	2010
W.R. "Bill" Murfin	09/98	1998	Donald Hollar	06/10	2010
Donald L. Hellar	11/98	1998	Delbert Costa	08/10	2010
Joseph E. Rakaskas	01/99	1999	John Tanner	08/10	2010
Charles W. Steincamp	02/99	1999	William (Bill) Owen	09/10	2010
Robert and Betty Glover	10/96	1998	Harold (Hal) Brown	10/10	2010
Howard E. Schwerdtfeger	11/98	1999	Edmund G. Lorenz	11/10	2010
W. W. "Brick" Wakefield	03/99	1999	Thomas E. Black	05/11	2011
V. Richard Hoover	01/00	2000	Wayne E. Walcher	07/11	2011
Warren E. Tomlinson	01/00	2000	Henry F. Filson	07/11	2011
James A. Morris	01/00	2000	Thomas Ray	07/11	2011
Eric H. Jager	03/00	2000	Edgar E. Smith	09/11	2012
Kenneth W. Johnson	03/00	2000	Marilyn Messenger	06/13	2013
Dean C. Schaake	03/00	2000	Micheal Mitchell	09/13	2013
Fred S. Lillibridge	05/00	2000	Orvie Howell	11/13	2013
Jerry A. Langrehr	07/00	2000	James Thompson	11/13	2013
Clark A. Roach	07/00	2000	Dick Rowland	09/13	2014
Floyd W. "Bud" Mallonee	10/00	2000	Robbie Thompson	12/13	2014
Ralph W. Ruuwe	09/00	2000	Kris Kennedy	04/14	2015
Robert L. Slamal	02/01	2001	Annette Hedke	02/15	2015
Jerold E. Jespersen	06/01	2001	James Devlin	04/15	2015
William A. Sladek	06/01	2001	Robert Gensch	09/15	2015
Harlan B. Dixon	06/01	2001	Jerald Rains	05/16	2016
Edward B. Donnelly	08/01	2001	Max Houston	05/16	2016
Richard P. Nixon	02/02	2002	Robert "Gus" Messenger	01/17	2017
Robert W. Frensley	12/01	2002			
Gerald W. Zorger	01/02	2002			
Don L. Calvin	03/02	2002			

CHANGE SERVICE REQUESTED

KGS BULLETIN
 May-June 2017

May 2017

Sun	Mon	Tue	Wed	Thu	Fri	Sat
	1	2 Tech Meeting	3	4 SIPES Meeting	5	6
7	8	9	10	11	12	13
14	15	16 KGS Board Tech Meeting	17 KGF Board	18 KGF Spring Mixer - Petroleum Club	19	20
21	22	23	24	25	26	27
28	29	30	31 Tech Meeting			

June 2017

Sun	Mon	Tue	Wed	Thu	Fri	Sat
				1	2	3
4	5	6	7	8	9	10
11	12	13 KGS Board	14	15	16	17
18	19	20	21	22	23	24
25	26	27	28	29	30	